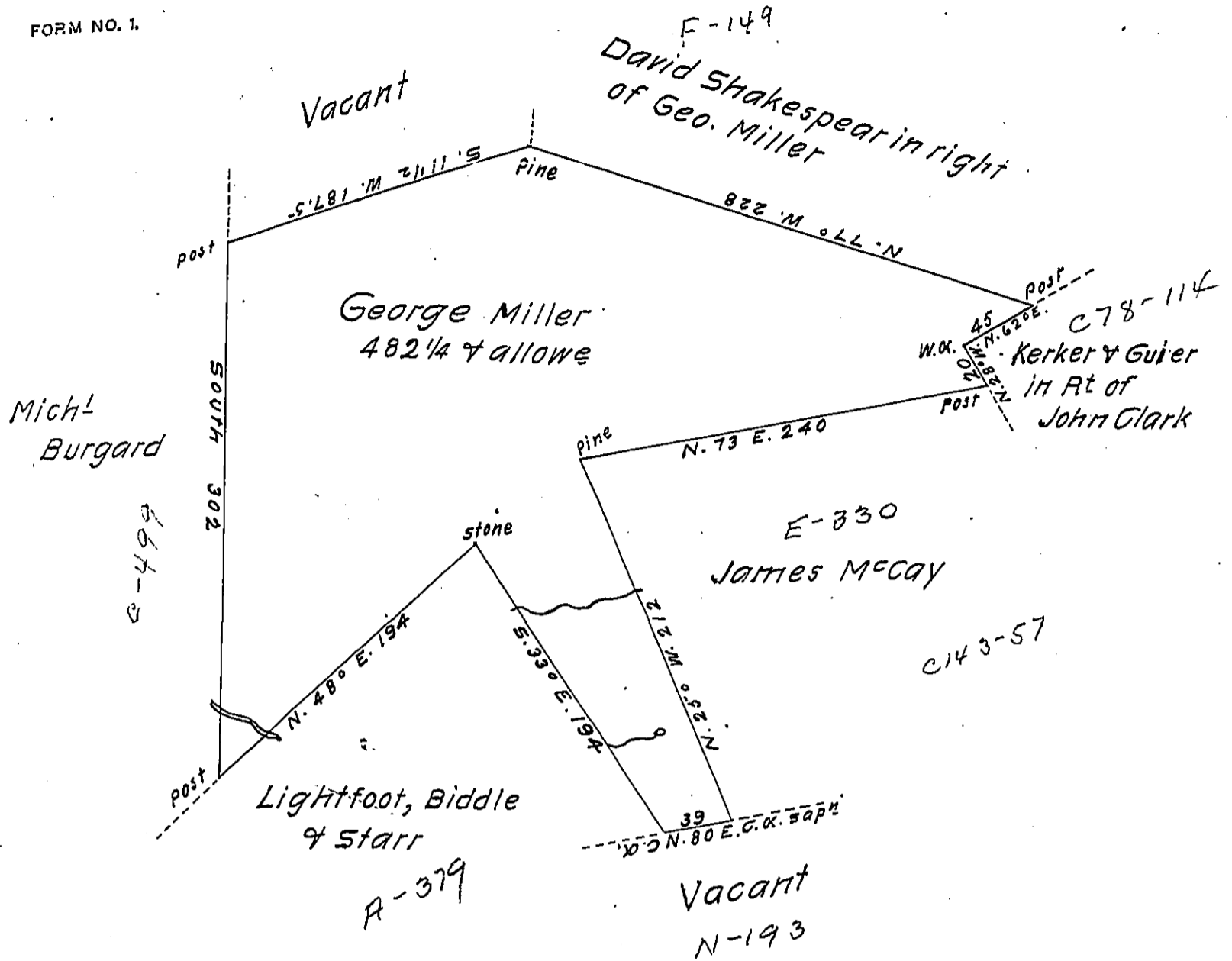


FORM NO. 1.



A draught of a tract of land called \_\_\_\_\_ situate on the waters of Shamoken Creek joining land of Kerker & Guier & others in Rapho township Northumberland County containing four hundred & eighty two acres & allowance of six per cent for roads &c. Surveyed for George Miller the 6<sup>th</sup> day June 1789 in pursuance of a warrant dated the 1<sup>st</sup> day of Dec<sup>r</sup> 1785.

by W<sup>m</sup> Gray D.S.

To John Lukens Esq<sup>r</sup> }  
 Surv<sup>r</sup> Gen<sup>l</sup> }

IN TESTIMONY that the above is a copy of the original remaining on file in the Department of Internal Affairs of Pennsylvania, made conformably to an Act of Assembly approved the 16th day of February, 1833, I have hereunto set my Hand and caused the Seal of said Department to be affixed at Harrisburg, this twenty-seventh day of March 1912

*Henry Fowler*  
 Secretary of Internal Affairs.